

Want More Information?

Call our support team on:
+44 (0)1254 669090

Or view technical specifications
directly on our website:
www.heatmiser.com



PDF



FAQ

heatmiser®



Model: Window/Door Wireless Contact Sensor

Rev 1.0

Model: Window/Door Wireless Contact Sensor



Sensor



Magnetic
Contact



i Introduction

The heatmiser 'Wireless Window/Door Contact Sensor' is designed to switch your heating system to standby whenever a window or door is opened. The heating will remain off until the window/door is closed.

With multiple zone heating control systems the sensor can shut off the radiators/underfloor heating for an individual room.

Multiple 'Wireless Window/Door Contact Sensors' can be paired to homes with just a single thermostat.* Which ever sensor breaks its contact the entire system will switch to standby. Only when all contacts are closed will the heating resume.

*Note: The 'Wireless Window/Door Contact' will only operate with 'heatmiser' compatible products. Visit www.heatmiser.com for more information.



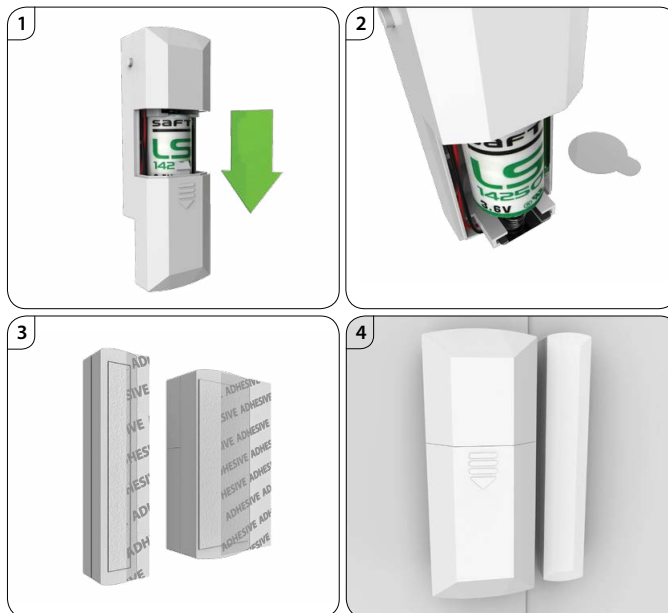
Installation

This Sensor is designed to be surface mounted.

1. To release the battery cover push down and slide in the direction of the arrow.
2. Remove the plastic tab between the battery and the contacts, then return the battery cover until it clicks into place.
3. Peel back the film from the adhesive pads on both the 'Contact Sensor' and the 'Magnetic Strip'.
4. Attach the 'Contact Sensor' to the framework and the 'Magnetic strip' to the window/door, making sure that the 'Magnet' is positioned on the opposite side of the 'Pairing Button', and no more than 5mm apart.

Recommendation

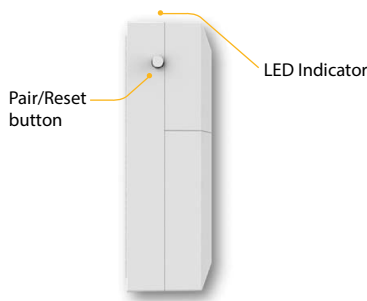
The recommended maximum distance between the 'Window/Door Wireless Contact Sensor' and the heatmiser compatible receiver is 40 meters.



Pairing

- On the 'Window/Door Wireless Contact Sensor', press and hold the pairing button for 5 seconds. The LED will glow red to indicate pairing status.

Window/Door Wireless Contact Sensor



If the sensor has successfully paired to your heatmiser compatible device, the LED indicator will go out after a few seconds.

If pairing is unsuccessful the LED will remain lit for 60 seconds before going off.

At this point, repeat the previous step and try again.

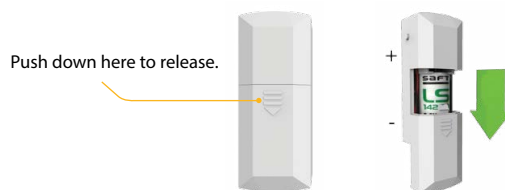


Removing/Reset

- Press and hold down the pairing/reset button for 15 seconds on the 'Sensor'. LED indicator will flash 3 times to confirm reset. At this point the 'Window/Door Wireless Contact Sensor' will notify your heatmiser compatible device that it has left the system, and will automatically be removed from the 'Accessory Menu'.



Replacing the Battery



- To release the battery cover push down and slide in the direction of the arrow.
- Remove the battery gently.
- Install a new **3.6V LS14250** battery with positive side to the top.
- Re-locate battery cover until it clicks back into place.