



FLOOR CONSTRUCTION DETAIL

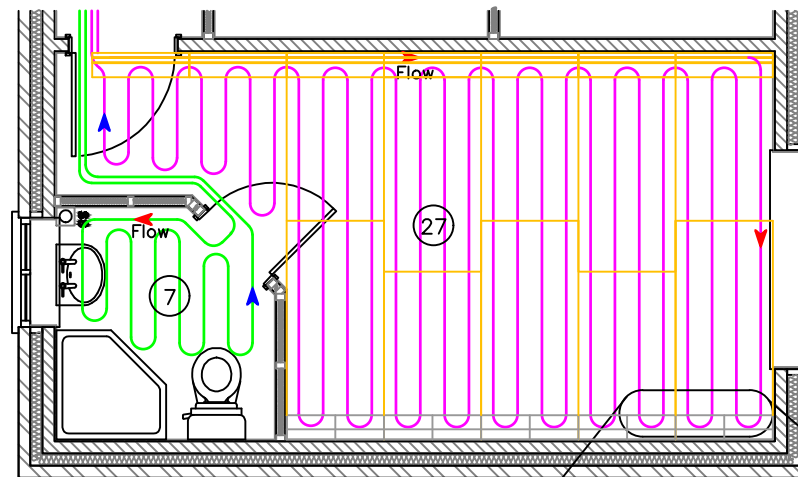
FC4 E – Overfloor Insulation

Technical Information

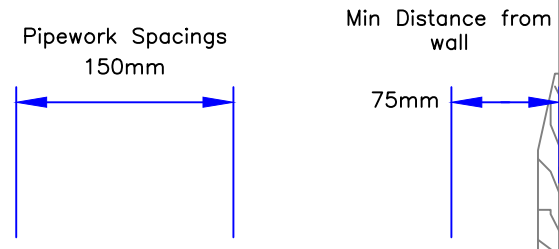
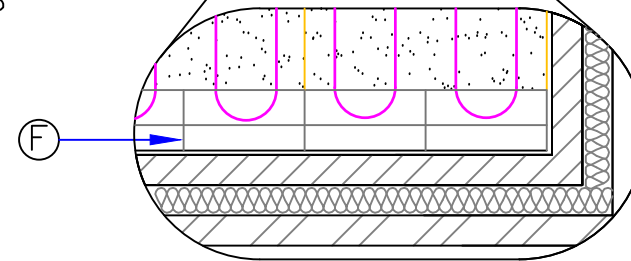
- A.) Floor Finish
- B.) Grooved and Cement backed insulation board (1200 x 600 x 20mm) fixed to a flat surface with tile adhesive
- C.) UFH Pipe – Lux FlexiPex 12mm Heating Pipework laid at 150mm centres in pregrooved slots and laid approximately 75mm away from walls.
- D.) Existing floor build up.
- E.) Pipe end return screwed to existing floor.
- F.) Plastic end return screwed through to existing floor

Insulation Technical Data

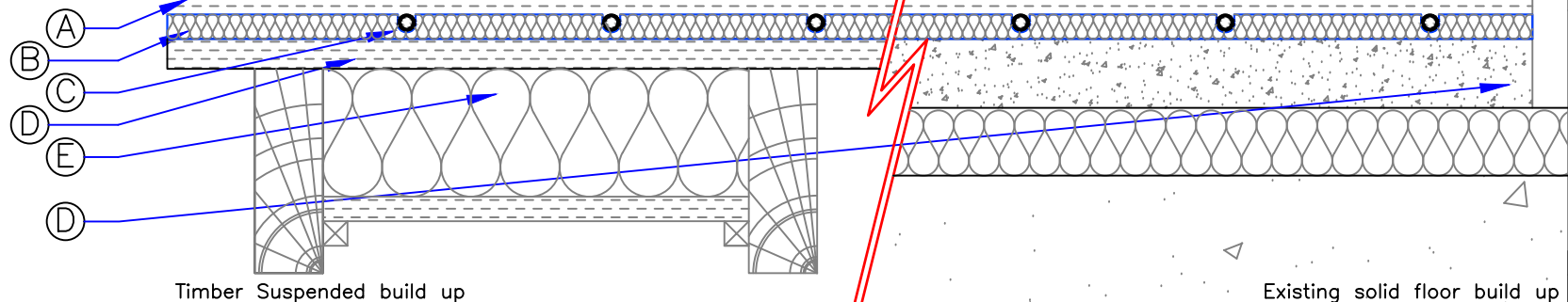
Extruded Polystyrene – Grade XF250 (BS EN 13164)
Grooved at 150mm Centres for 12x2mm Lux FlexiPex
Thermal Conductivity: 0.033 W/mK
Compressive Strength: 300kPa @ 10% Compression
Fire Classification: Euroclass E



Plan View – NTS



Section of floor build up – NTS



Timber Suspended build up

Existing solid floor build up